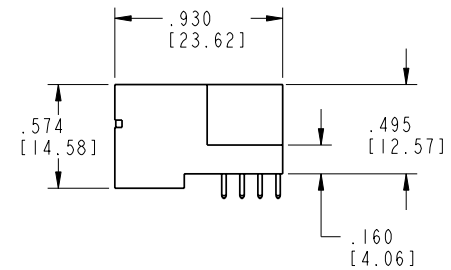
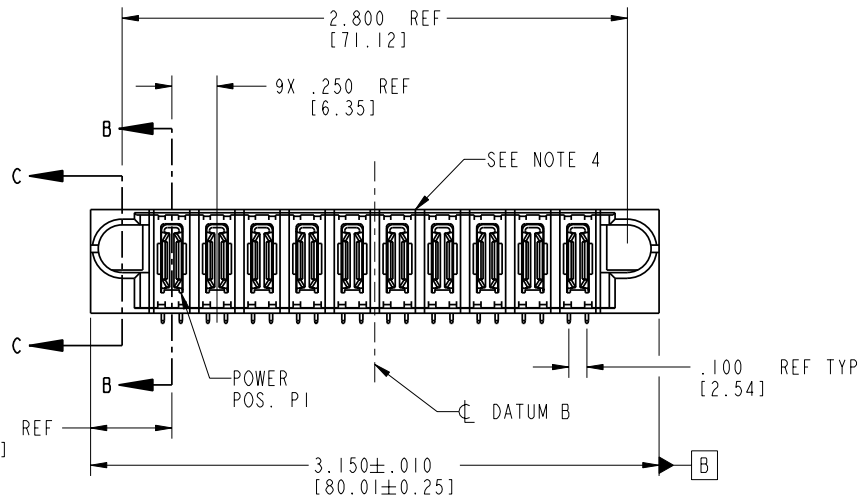
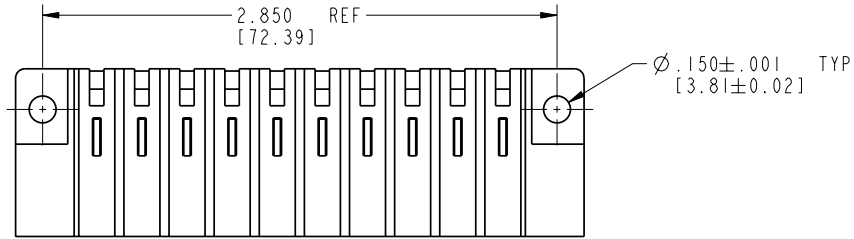
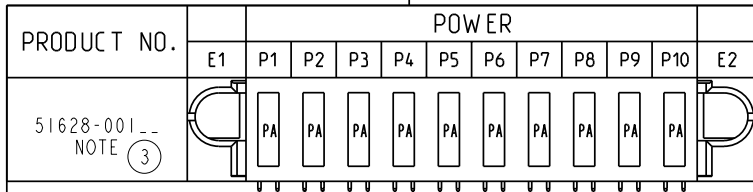


Tous droits strictement réservés. Reproduction ou communication à des tiers interdite sans quelque forme que ce soit sans autorisation écrite du propriétaire. Propriété de c FCI. Droits de reproduction FCI.



All rights strictly reserved. Reproduction or issue to third parties in any form whatever is not permitted without written authority from the proprietor. Property of FCI. Copyright FCI.



CODE	DIM "M" MATING LENGTH	CONTACT TYPE
PA	N/A [N/A]	POWER

mat'l code				tolerances unless otherwise specified		CUSTOMER	
SEE NOTE 2						FCI	
lir	ecn no.	dr	date	linear	COPY		
A	V90695	CHB	03-15-99	.XX±.01/0.X±0.3	www.fciconnect.com		
B	V11177	CGD	04-10-01	.XXX±.005/0.XX±0.13	projection		
C	V12541	DAI	12-05-01	.XXX±.0020/0.XXX±0.051	INCH/MM		
D	DG06-0156	RYAN	04/07/06	angles	scale 1:1		
				dr	C.RAROT	03-15-99	product family
				engr	J.BROWN	03-15-99	PwrBlade
				chr	J.BROWN	03-15-99	code
				appd	J.BROWN	03-15-99	213
sheet index	revision	D	D	D	D		sheet
1	2	3	4				1 of 4

cage code 22526

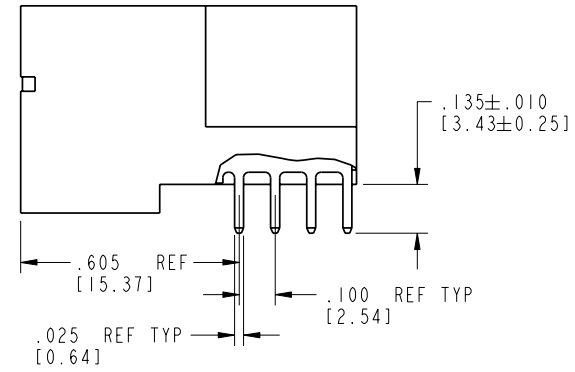
Pro/E

Tous droits strictement reserves. Reproduction ou communication a des tiers interdite sous quelque forme que ce soit sans autorisation ecrite du proprietaire. Propriete de c FCI. Droits de reproduction FCI.

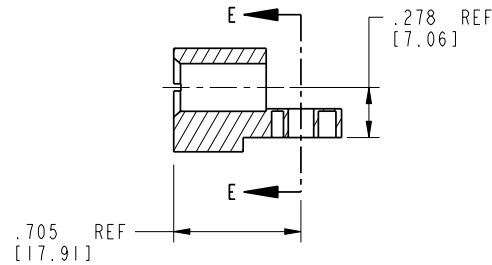


All rights strictly reserved. Reproduction or issue to third parties in any form whatever is not permitted without written authority from the proprietor. Property of FCI. Copyright FCI.

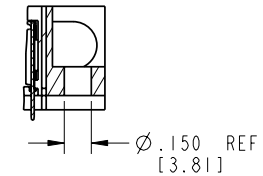
PRODUCT NUMBER
51628-001--
NOTE (3)



BROKEN-OUT SECTION B-B
SCALE 2:1



SECTION C-C



PARTIAL SECTION E-E

mat'l code SEE NOTE 2				tolerances unless otherwise specified		CUSTOMER		FCI	
lfr	ecn no.	dr	date	linear	.XX±.01/0.X±0.3	COPY		www.fciconnect.com	
D				linear	.XXX±.005/0.XX±0.13	projection		title 10P	
				linear	.XXX±.002/0.XXX±0.051	INCH/MM		RIGHT ANGLE SOLDER HEADER	
				angles	0°±2°	scale 1:1		product family PwrBlade code	
				dr	C.RAROT 03-15-99	A		size 213	
				enrg	J.BROWN 03-15-99	51628		sheet 2 of 4	
				chr	J.BROWN 03-15-99				
				appd	J.BROWN 03-15-99				
sheet index		revision sheet							

cage code 22526

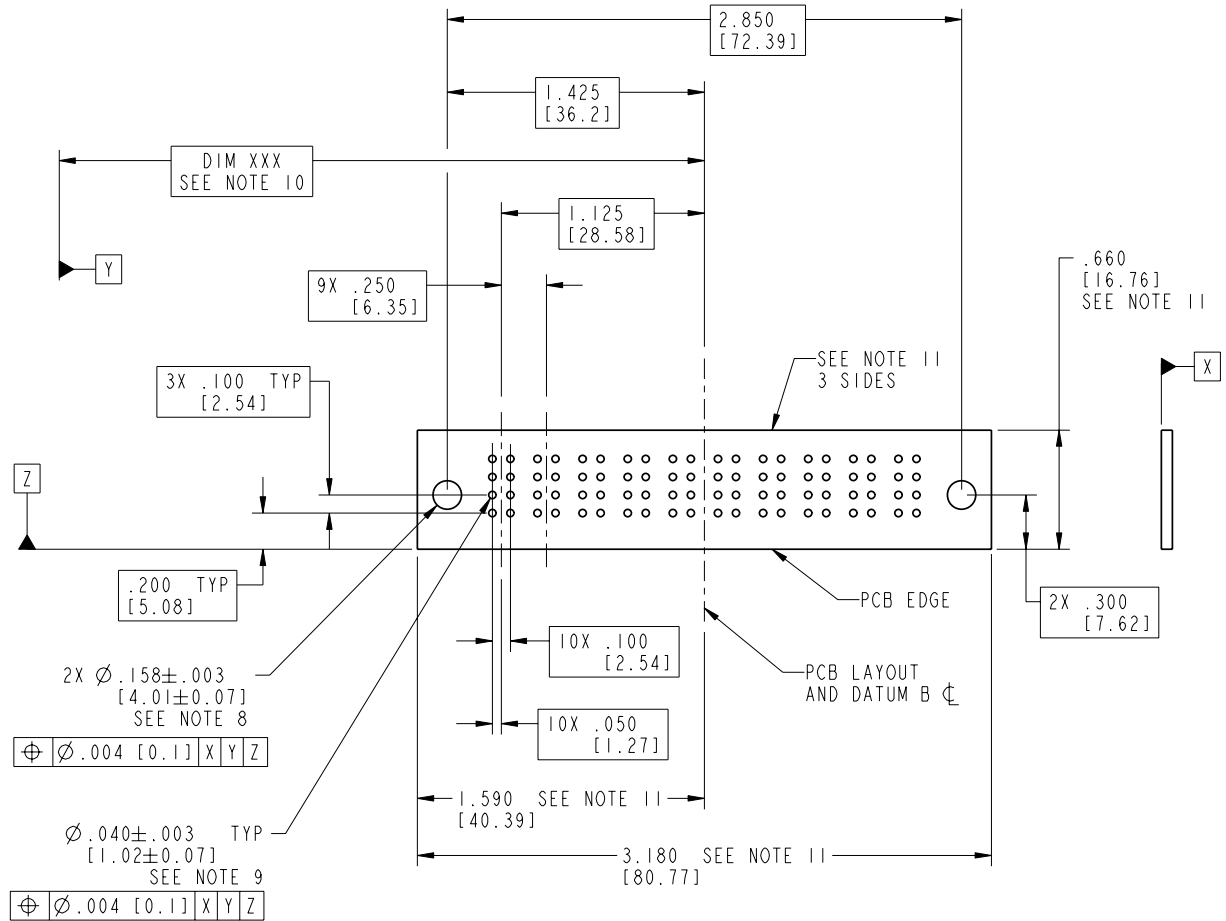
Pro/E

Tous droits strictement reserves. Reproduction ou communication a des tiers interdite sous quelque forme que ce soit sans autorisation écrite du propriétaire. Propriete de c FCI. Droits de reproduction FCI.



All rights strictly reserved. Reproduction or issue to third parties in any form without is not permitted without written authority from the proprietor. Property of FCI. Copyright FCI.

PRODUCT NUMBER
51628-001--
NOTE ③



RECOMMENDED PCB LAYOUT

mat'l code				SEE NOTE 2	tolerances unless otherwise specified		CUSTOMER		 www.fciconnect.com
lfr	ecn no.	dr	date	linear	.XX±.01/0.X±0.3	COPY	projection	title	
D					.XXX±.005/0.XX±0.13			10P	
				angles	.XXX±.002/0.XXX±0.051			RIGHT ANGLE SOLDER HEADER	
				dr	0°±2°	C.RAROT	03-15-99	product family	PwrBlade
				enrg		J.BROWN	03-15-99	size	dwg no
				chr		J.BROWN	03-15-99	A	51628
				appd		J.BROWN	03-15-99	scale	1:1
sheet index	revision sheet								

cage code 22526

Pro/E

Tous droits strictement reserves. Reproduction ou communication a des tiers interdite sous quelque forme que ce soit sans autorisation écrite du propriétaire. Propriete de c FCI. Droits de reproduction FCI.



All rights strictly reserved. Reproduction or issue to third parties in any form whatever is not permitted without written authority from the proprietor. Property of FCI. Copyright FCI.

PRODUCT NUMBER
51628-001__
NOTE ③

NOTES:

1. DIMENSIONS AND TOLERANCES ARE IN ACCORDANCE WITH ASME Y14.5M, 1994 UNLESS OTHERWISE SPECIFIED.

CONNECTOR NOTES:

- ② HOUSING MATERIAL: UL 94 V-0 GLASS FILLED HIGH-TEMP THERMOPLASTIC
POWER CONTACT MATERIAL: COPPER ALLOY
SIGNAL PIN MATERIAL: COPPER ALLOY
- ③ PLATING:
SEE PRINT 10064183 FOR PLATING SPEC OF 51628-001; 51628-001LF
- ④ MANUFACTURER'S NAME, P/N, AND DATE CODE TO APPEAR ON THIS SURFACE.

5. PRODUCT SPECIFICATION GS-12-149.
APPLICATION SPECIFICATION BUS-20-067.

6. PACKAGED IN TRAYS.

PCB NOTES:

7. ALL HOLE DIAMETERS ARE FINISHED HOLE SIZE.

- ⑧ MOUNTING HOLES, WHERE APPLICABLE, ARE UNPLATED.
- ⑨ $\varnothing .0453 \pm .0010$ [1.151 \pm 0.025] DRILLED HOLES PLATED WITH
.0003 [0.008] MIN SnPb OVER .001 [0.03]
TO .003 [0.08] Cu PLATING TO ACHIEVE
 $\varnothing .040 \pm .003$ [1.02 \pm .07] HOLE.

⑩ "DIM XXX" TO BE DETERMINED BY THE CUSTOMER.

⑪ CONNECTOR KEEP-OUT ZONE.

mat'l code				SEE NOTE 2		tolerances unless otherwise specified		CUSTOMER		FCI	
lfr	ecn no.	dr	date	linear	.XX±.01/0.X±0.3	COPY		www.fciconnect.com		title	
D					.XXX±.005/0.XX±0.13	projection		10P		RIGHT ANGLE SOLDER HEADER	
				angles	.XXX±.002/0.XXX±0.051	INCH/MM		product family		PwrBlade	
				dr	0° ± 2°	scale		size		code	
				enrg	C.RAROT 03-15-99	1:1		dwg no		213	
				chr	J.BROWN 03-15-99			51628		sheet	
				appd	J.BROWN 03-15-99			A		4 of 4	
sheet index		revision sheet									

cage code 22526

Pro/E